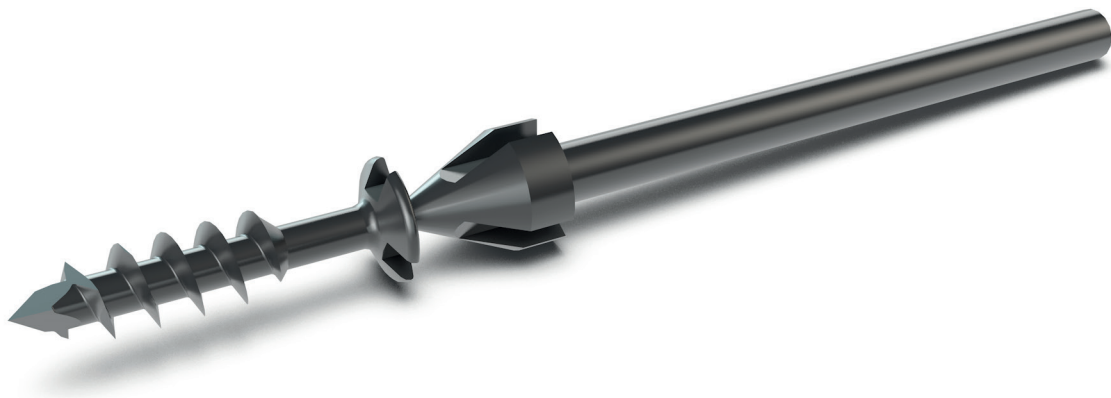


I.B.S.[®]

SNAP-OFF SCREW



The I.B.S.[®] snap-off screw by In2Bones is designed for monocortical fixation.

The I.B.S.[®] snap-off is made of Titanium alloy TA6V and is available in 2.2mm and 2.7mm diameter.

The I.B.S.[®] snap-off design optimizes self-drilling performance, reduces risk of breakage below the screw head and thus improves comfort of use.



A GLOBAL EXTREMITY COMPANY

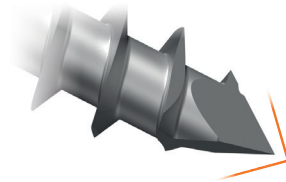
I.B.S.[®]

SNAP-OFF SCREW - PRODUCT DESCRIPTION

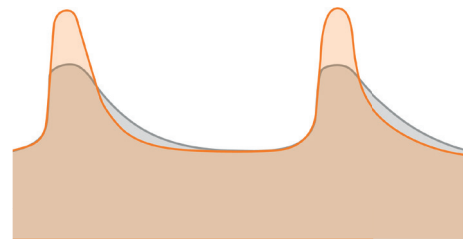


Threads design optimization

- The tip of the I.B.S.[®] screw is designed as a trocar so it can penetrate easily the cortical wall.



- Screw thread profile has also been designed for an optimized fixation and an easy insertion.

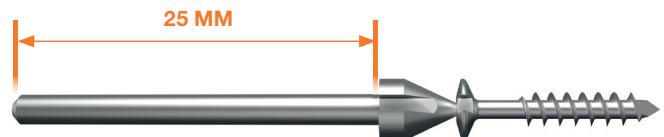


— I.B.S.[®] screw thread design

— Regular screw HA thread design according to ISO 5835

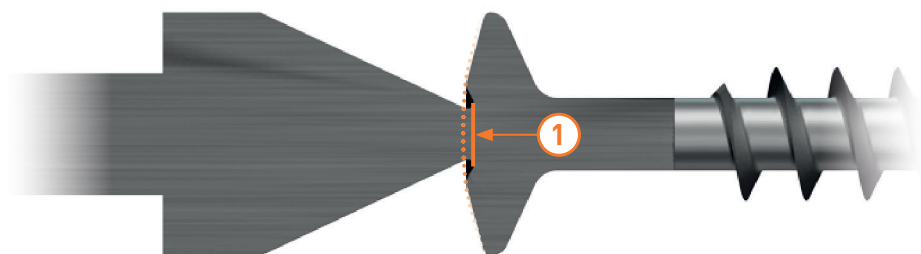
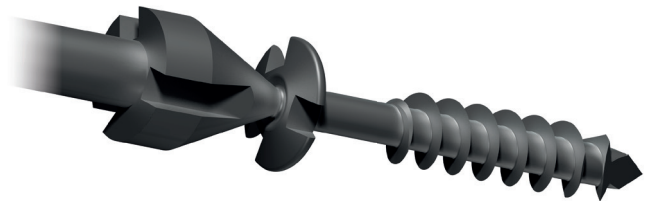
Barrel length

- The 25mm barrel allows the snap-off screw to be inserted with a power system.



Snap-off line

- The snap-off section ① beneath screw line is optimized to limit the risk of extensors irritation.



Single Use Instruments range Neosys®

The Neosys® single use instrument sets range is specially designed to implant:

- 2,2 and 2,7mm snap-off screw
- 2.0, 2.5, 3.0 and 3.5mm compression screw
- 2.5, 3.0 and 3.5mm neutralization screw

For further information about the Neosys® single use instrument sets, please refer to the dedicated brochure.

In2Bones® Single use instruments are in recyclable polymer.

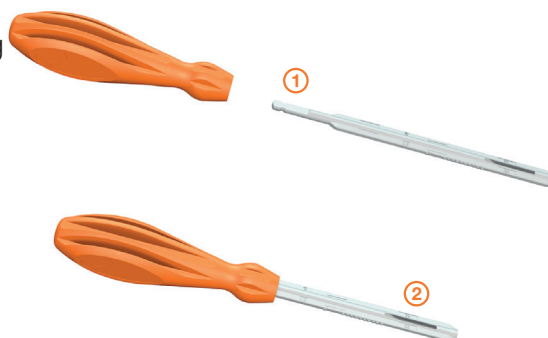
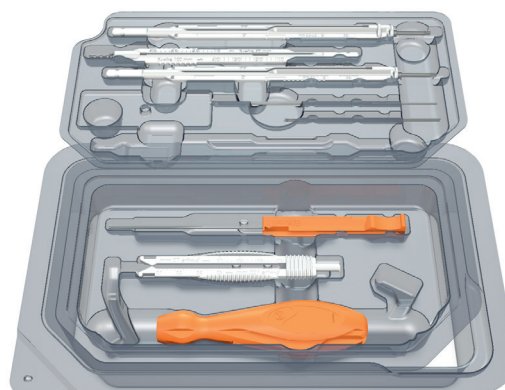
It has been specially designed to be single use while guaranteeing efficiency and optimal comfort for the practitioner.

The design of instruments guarantees precision and resistance to torsional stresses.

Screwdriver axis can be used either with the handle or with a power drill equipped with an AO attachment. ①

Screwdrivers axis are cannulated with an open window to ease barrel extraction after snap-off. ②

Screwdriver axis is secured inside the handle with a locking mechanism. The T shape of the handle guarantees that the axis is properly positioned with the locking mechanism.



I.B.S.®

SNAP-OFF SCREW - ORDERING INFORMATIONS

INSTRUMENTS

The Neosys® Single Use Instrument Set is available in different configurations according to surgeon's technics and preferences.

For further information about the Neosys® single use instrument sets, please refer to the dedicated brochure.

IMPLANTS

Innovative Bone Synthesis® 2.2-S Snap-off screw Titanium Sterile - Diam. 2.2 mm

Lg 09mm	S22 ST009	Lg 12mm	S22 ST012
Lg 10mm	S22 ST010	Lg 13mm	S22 ST013
Lg 11mm	S22 ST011	Lg 14mm	S22 ST014

Innovative Bone Synthesis® 2.7-S Snap-off screw Titanium Sterile - Diam. 2.7 mm

Lg 11mm	S27 ST011	Lg 15mm	S27 ST015
Lg 12mm	S27 ST012	Lg 16mm	S27 ST016
Lg 13mm	S27 ST013	Lg 18mm	S27 ST018
Lg 14mm	S27 ST014	Lg 20mm	S27 ST020

INDICATIONS

The I.B.S.[®] Snap-off screw is intended for use in foot surgery, as a fixation of metatarsal osteotomies. Examples include:

- Weil osteotomy,
- Modified Distal Horizontal Metatarsal Osteotomy,
- Dorsal Closing Wedge Osteotomy.

CONTRA-INDICATIONS

The implant should not be used in a patient who has currently, or who has history of:

- systemic, acute or chronic inflammations,
- active infections,
- sensitivity/allergies to the implant materials.

RECOMMENDATION

It is recommended to carefully read the instructions for use available in the package insert.

REIMBURSEMENT

Reimbursement may vary from countries to countries. Check with local authorities.

CE MARKED MEDICAL DEVICE

EC Classification (EC Directive MDD 93/42/CE)

- Implant: CE Class IIb - CE2797
- Single Use Instruments: Class IIa - CE2797
- Other Instrument : class I - CE

MANUFACTURER

In2Bones SAS
28, chemin du Petit Bois
69130 Ecully – FRANCE
Tél : +33 (0)4 72 29 26 26
Fax : +33 (0)4 72 29 26 29

DOCUMENT

Reference : BR-DIG-IBSS-EN-032021

Availability of these products might vary from a given country or region to another, as a result of specific local regulatory approval or clearance requirements for sale in such country or region.

Always refer to the appropriate instructions for use for complete clinical instructions.

Non contractual document. The manufacturer reserves the right, without prior notice, to modify the products in order to improve their quality.

CAUTION: Federal law (USA) restricts this device to sale and use by, or on the order of a physician.

Except otherwise specified, all commercial trademarks used in this document, In2bones and the In2bones logo are trademarks or registered trademarks of In2bones or its subsidiaries.



A GLOBAL EXTREMITY COMPANY

In2Bones.com

International Office

In2Bones SAS • 28, chemin du Petit Bois • 69130 Ecully • FRANCE
+33 (0)4 72 29 26 26 • contact@in2bones.com

Corporate Headquarters

In2Bones Global, Inc. • In2Bones USA • Memphis, TN • USA
+1 844. 602. 6637 • Info@i2b-USA.com

In2Bones[®] as the manufacturer of this device, does not practice medicine. The surgeon who performs any implants procedure is responsible for determining and using the appropriate surgical techniques for implanting the device in each patient. This surgical technique manual is furnished for information purposes, as an aid to use properly the device and its dedicated instruments. In2bones and the In2bones logo are trademarks or registered trademarks of In2bones or its subsidiaries.
©2020 In2Bones - All rights reserved
BR-DIG-IBSS-EN-032021