



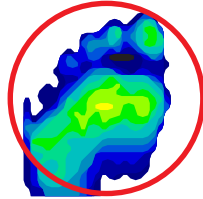
## Foot and Ankle Products



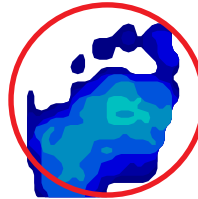
**DARCO**

# OrthoWedge®

Off-loading Shoe



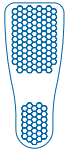
Standard Surgical Shoe



DARCO OrthoWedge™

- › 15° wedge sole effectively shifts body weight to the midfoot and heel. Reduces forefoot pressure by as much as 57%!
- › Square-toe design acts as a bumper to protect the toes when k-wires are present and provides better left/right fit.
- › Ankle strap seats foot firmly in shoe to reduce heel slippage and eliminate friction.
- › Removable forefoot closure provides security while eliminating buckle pressure.
- › Zoned outsole has an aggressive tread under the midfoot where traction is needed most.
- › EVA insole features twice the padding of standard insoles and can be modified as needed or removed to accommodate PQ PegAssist™ off-loading insole.

## Compatible with:



PQ PegAssist™



Body Armor® Toe Guard - Square-toe

The OrthoWedge® is clinically proven to reduce weight bearing pressure on the forefoot which promotes faster healing after surgery, trauma or when forefoot wounds or ulcerations are present.